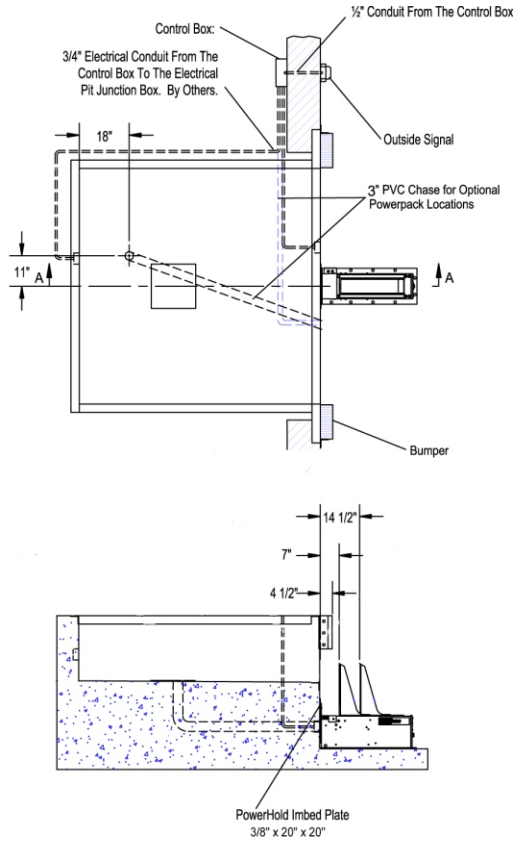
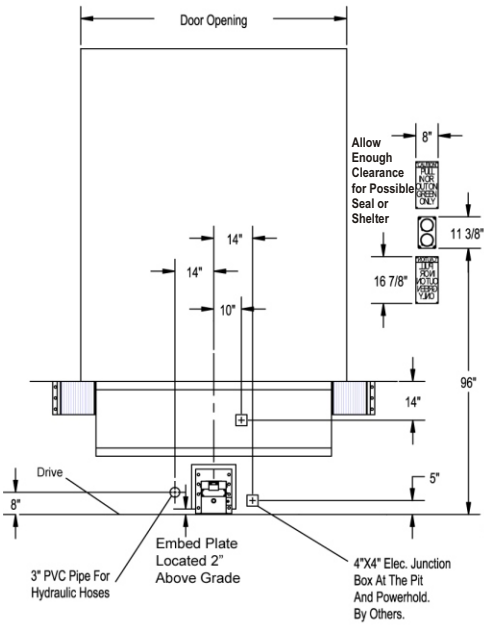


PowerHold Installation Overview

For comprehensive installation instructions of the PowerHold read and understand the Installation and Operation Manual.

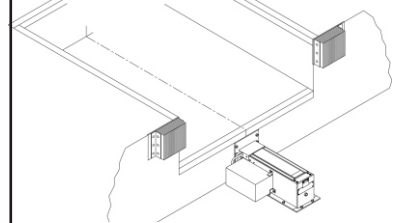


POWERPACK LOCATION OPTIONS

Coordinate powerpack location and hose length for proper placement.

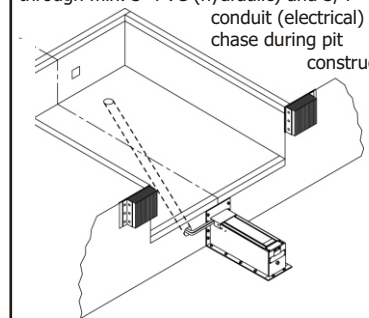
Dock Face (Self Contained)

Appropriate location when the likelihood of flooding, snow removal and damage from trailer/trucks is minimal. Also recommended for use with non-hydraulically powered dock levelers.

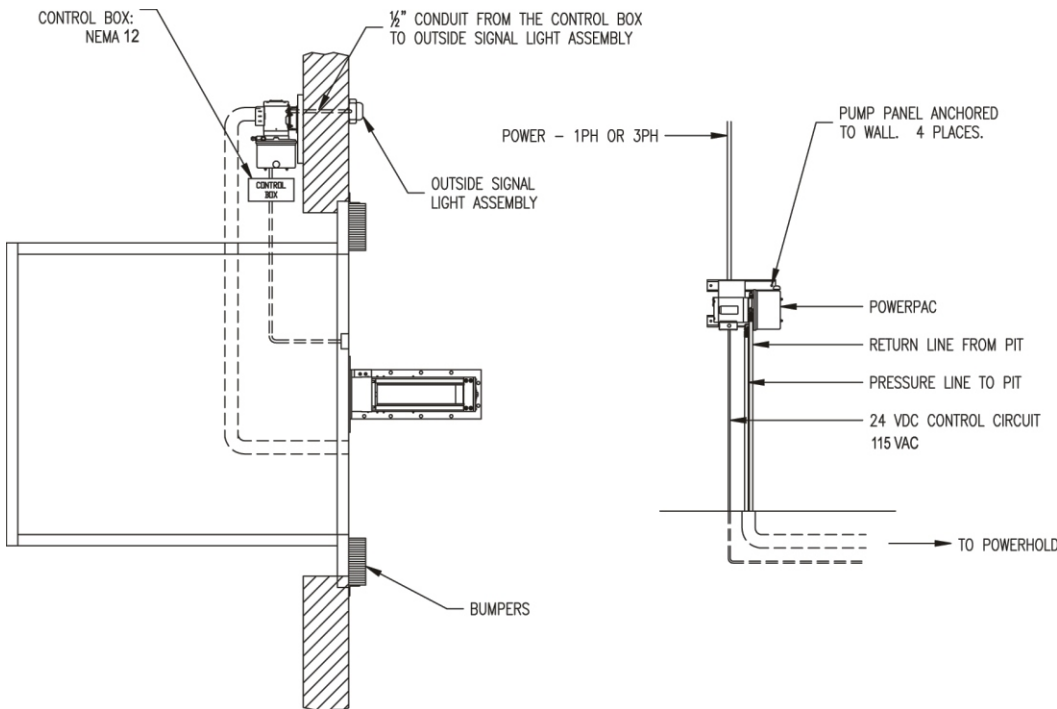


Under The Dock Leveler

When combined with hydraulic leveler pump or remotely mounting under leveler, make certain to locate the powerpack where leveler will not interfere in below dock conditions. The routing of hydraulic and electrical lines from the powerpack to the restraint are best placed through min. 3" PVC (hydraulic) and 3/4" conduit (electrical) chase during pit construction.

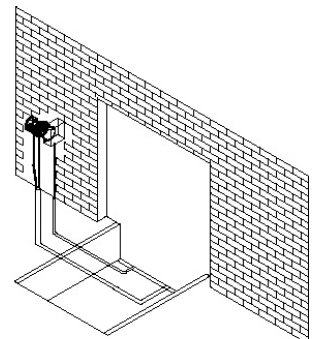


POWERHOLD REMOTE MOUNT POWERPACK



Inside Building (Remote Mount)

Locate powerpack to minimize obstruction potential. Hydraulic and electrical lines from the powerpack to the restraint are best placed through min. 3" PVC (hydraulic) and 3/4" (electrical) chase during pit construction.



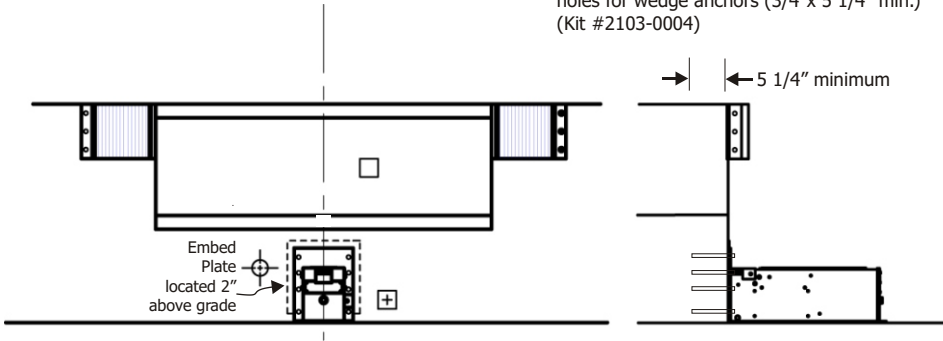
PowerHold Installation Overview

For comprehensive installation instructions read and understand the Installation and Operation Manual.

Concrete Dock Face (Standard installation)

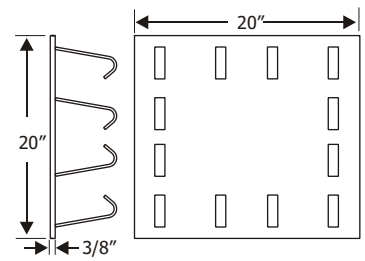
Wedge Anchors Method

Using back plate as a guide, drill eight (8) holes for wedge anchors (3/4"x 5 1/4" min.) (Kit #2103-0004)



Weld Plate Embed Method

Weld three sides of PowerHold back plate to the optional embed mounting plate (Part #7953-0119) with continuous 1/4" fillet weld.



Cantilevered Dock (For bumper projection >4" or cantilevered dock or Edge-of-Dock leveler)

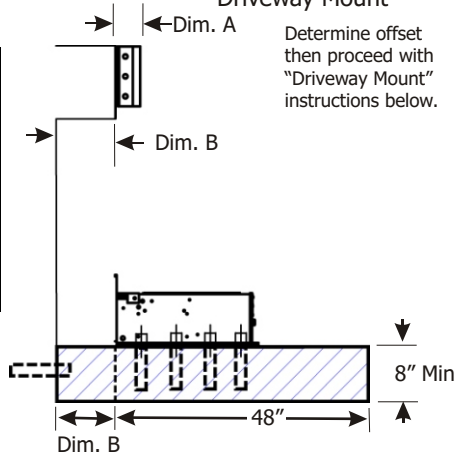
To determine size offset required, take total effective bumper projection (bumper size plus any cantilever) and subtract 4".

Offset Formula

Dim. A Bumper Projection	Dim. B Cantilever	Offset
4"	+ Dim B	-4" = Offset
6"	+ Dim B	
10"	+ Dim B	
15"	+ Dim B	

Driveway Mount

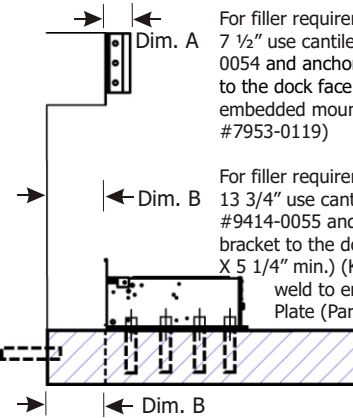
Determine offset then proceed with "Driveway Mount" instructions below.



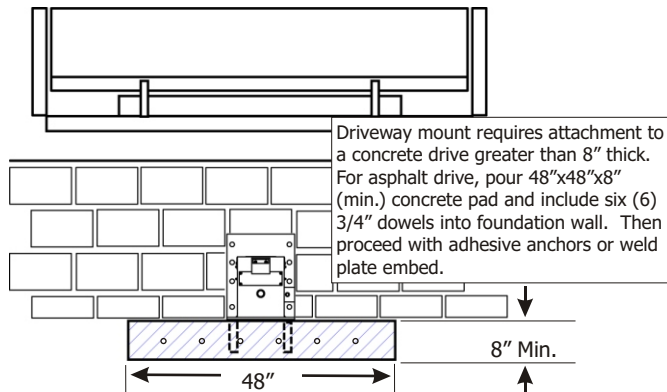
Wall Mount

For filler requirements from 1 1/2" to 7 1/2" use cantilever bracket #9414-0054 and anchor cantilever bracket to the dock face or weld to embedded mounting plate (Part #7953-0119)

For filler requirements for 8 3/4" to 13 3/4" use cantilever bracket #9414-0055 and anchor cantilever bracket to the dock face (3/4" Dia. X 5 1/4" min.) (Kit #2103-0004) or weld to embedded mounting Plate (Part #7953-0119).



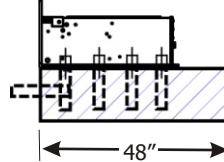
Driveway Mount (Recommended when dock face is unsuitable for PowerHold Mounting)



Wedge Anchors Method

(Kit #2103-0005)

Install nine (9) 3/4" Dia. x 5 1/4" min. wedge anchors at the base of the PowerHold.



Drive Embed Method

Weld method

Properly locate and level the drive embed weld plate (Part #7953-0132) in the drive approach. Observe Cantilever conditions for proper positioning. Weld restraint to embed plate with a continuous 1/4" fillet weld.

