

## PowerHook Installation Overview

For comprehensive installation instructions of the PowerHook read and understand the Installation and Operation Manual.

Additional installation procedures not given in this overview are required if the unit is part of a CENTRAPOWER system or if the unit has a power pack mounted in a location that is remote from the unit.

### PREPARATION

1. Some units are shipped with the control assembly, bumpers, and outside signal light assembly attached to the unit. Remove these items from the unit prior to installing unit in pit. DO NOT remove the shipping bands at this time.
2. Remove all debris from the pit.
3. Check the pit dimensions with the certified Pit Drawing. Make sure that the walls of the pit are plumb and square with no bulges. Make sure the dock height, the location of the plates imbedded in the pit, and the location of the junction box are as specified on the Pit Drawing.

### INSTALLING UNIT IN PIT

4. Place the shims for the front and rear legs on the plates imbedded in the pit floor. Position the shims so that the legs will rest firmly on the shims when the unit is lowered into the pit. Shim so that dimension from top of shims to dock floor is as shown in Figure 1 Recommended shim stock sizes are given in Figure 2.

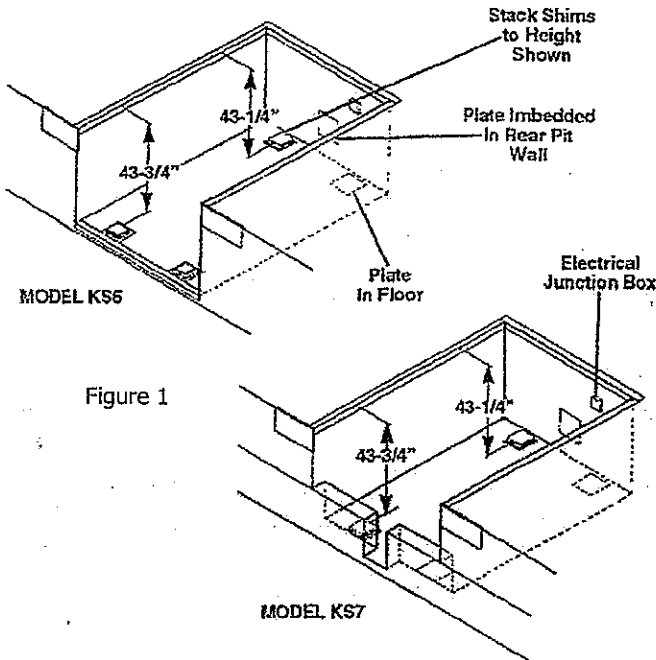
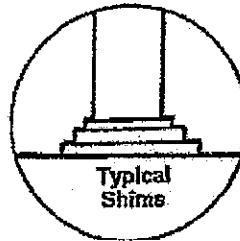
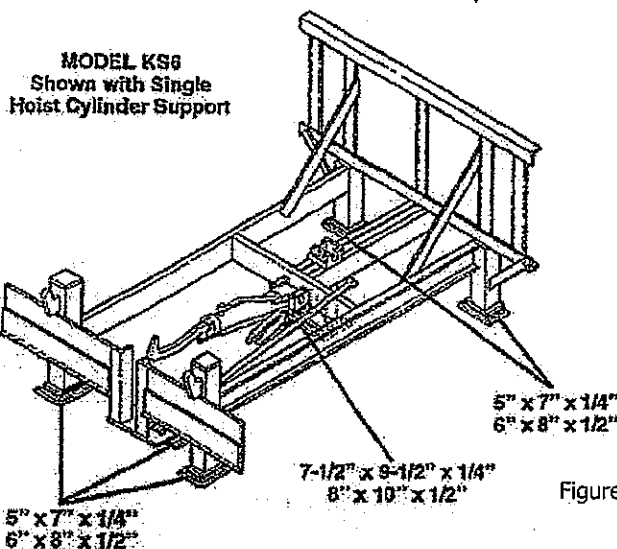


Figure 1



Typical Shims

MODEL KS6  
Shown with Single  
Hoist Cylinder Support



MODEL KS7  
Shown with Dual  
Hoist Cylinder Supports

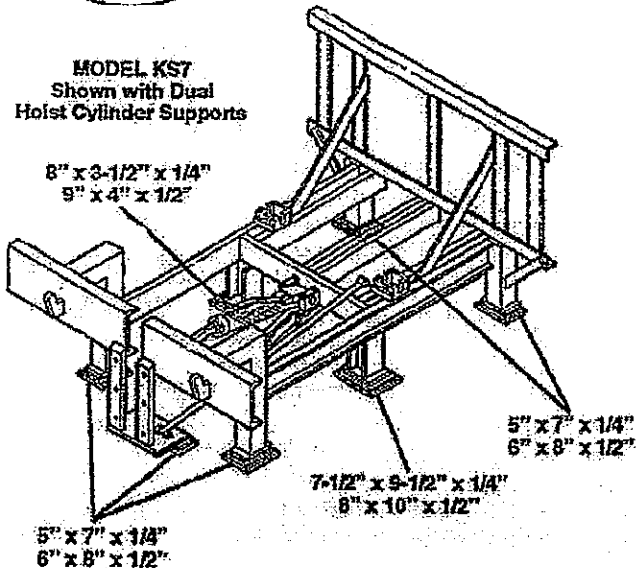
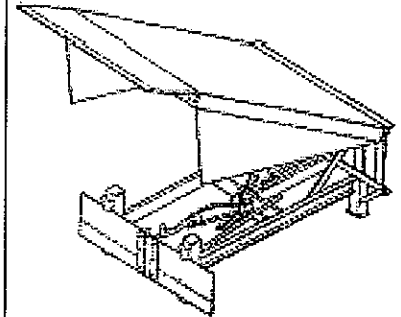
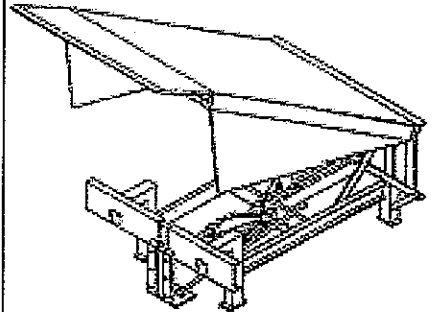


Figure 2

### Installation Overview For:



PowerHook  
Full Pit Depth Stand Mounted (KS6)



PowerHook  
Recessed Front Stand Mounted (KS7)

## PowerHook Installation Overview

For comprehensive installation instructions read and understand the Installation and Operation Manual.

### Installation continued

5. Hoist the unit into the pit with a chain/sling using the lifting plates on the sides of the dock leveler platform. Perform the following checks when setting the unit into the pit:
  - A. Make sure the front and rear legs will rest securely on the shims set on the pit floor.
  - B. Make sure the top rear frame angle of the dock leveler is tight against the rear pit curb angle and is flush with the dock floor.
  - C. Make sure there is equal clearance between the sides of the leveler platform and the pit walls.
6. Remove the shipping bands from the unit.
7. Use fork truck (or other method) to raise dock leveler platform.
8. Position shims under the hinge tubes of the maintenance prop so that the front panel support weldment is level. Recommended shim stock sizes are given in Figure 2. DO NOT weld shims.
9. Use a fork truck (or other method) to raise dock leveler platform to a height that will allow use of the maintenance prop. The maintenance prop is accessible when the platform is raised. The top of the prop should be positioned directly behind the front header plate of the platform. See Figure 3.
10. Make sure that the front and rear legs are resting firmly and securely on the shims set on the pit floor. DO NOT weld shims.
11. Use a fork truck (or other method) to raise the dock leveler platform. Remove the maintenance prop: Set the platform in the cross traffic position (lip fully folded, inside the keepers, and the platform level with the dock floor) See Figure 4.
12. Make sure the dock leveler deck is flush with the dock floor that the top rear frame angle of the unit is tight against and flush with the rear pit curb angle. Raise platform and add or subtract shims if required. Make sure that there is equal clearance between the sides of the platform and the pit walls.
13. Weld the top rear frame angle to the rear pit curb angle. Weld behind each hinge tube of the leveler platform. See Figure 5.
14. Refer to Figure 1. For PowerHook KS6 units only: Tack weld the shims under the front legs to the legs, the plates imbedded in the pit floor, and to the pit front curb angle. This should be done from outside the pit prior to raising platform.
15. Repeat step 9.
16. Finish weld all shims to unit and, where possible, to plates or pit curb angles. Weld shims together where stacked.
17. Refer to Figure 2.
  - A. On units with single hoist cylinder, shim under the hoist cylinder support so that the center channel are level. Weld shims in place.
  - B. On units with dual hoist cylinders, shim under the cylinder supports so that the side channels are level. In addition, shim under the center beam support so that the center beam is level. Weld all shims in place.
18. Weld fish plates to the center channels of the unit and to the plate imbedded in the rear pit wall. Refer to Figure 6 for recommended fish plate sizes and location.
19. Clean and paint all welds.

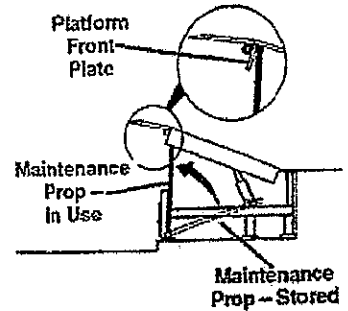


Figure 3

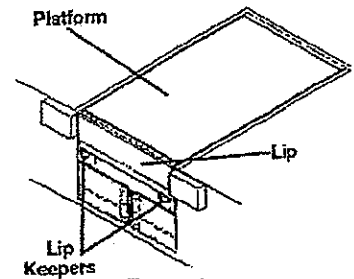


Figure 4

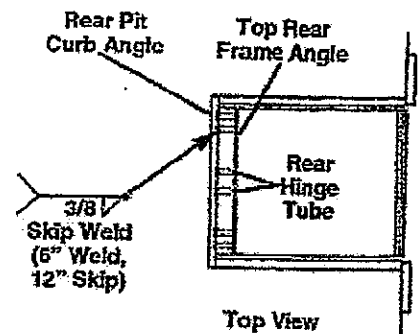


Figure 5

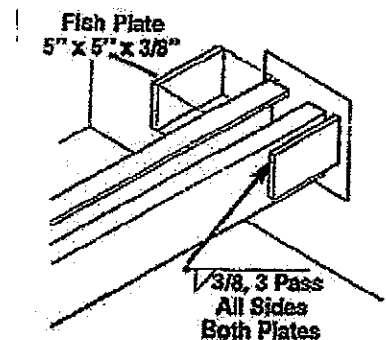


Figure 6

### Hydraulic Installation

20. Weld and/or bolt bumpers in place on face of dock. Refer to certified Pit Drawing.
21. If unit is part of a CENTRAPOWER system or if the powerpack is boated remotely, connect the hydraulic hoses to the dock leveler as indicated in separate CENTRAPOWER or remote power pack instructions.
22. Check the hydraulic fluid level. Standard units are shipped with the reservoir full. However, fluid level should be checked before operating unit for the first time to make sure no fluid loss occurred during shipment or installation. See the Preventative Maintenance section. NOTE: For CENTRAPOWER or remote power pack units, see appropriate instructions.
23. If the electrical installation is to be performed at a later date, use a fork truck to set the unit in the cross traffic position (lip fully folded, inside the lip keepers, and the platform level with the dock floor).

A continuing product improvement process is in effect at Systems, Inc. We reserve the right to make product changes without prior notice.

Poweramp • Division of Systems, Inc. • W194 N11481 McCormick Dr. • Germantown, WI 53022  
800.643.5424 • fax: 262.255.4199 • www.DockSystemsInc.com

## Electrical Installation

- If the dock leveler is in the cross traffic position, use a fork truck (or other method to raise the platform and set it on the maintenance prop.
- Install control assembly on inside wall beside dock door or on other secure support Refer to pit drawing attached to this manual
- Install outside signal light assembly on outside wall or other support 8' above drive on truck drivers side of dock leveler. Refer to pit drawing.
- Wire units per wiring diagrams attached to this manual.

### IMPORTANT:

- Make sure that the power supply requirements as shown on the dock leveler serial plate, on the decal affixed to the control assembly, and on the attached wiring diagrams are the correct requirements for the application.
- For 3 phase applications, check motor rotation if the unit does not begin to operate within four seconds after the hydraulic pump motor is energized.
- Install the outside "Caution" signs. See pit drawing.
- Adjust and test unit.

