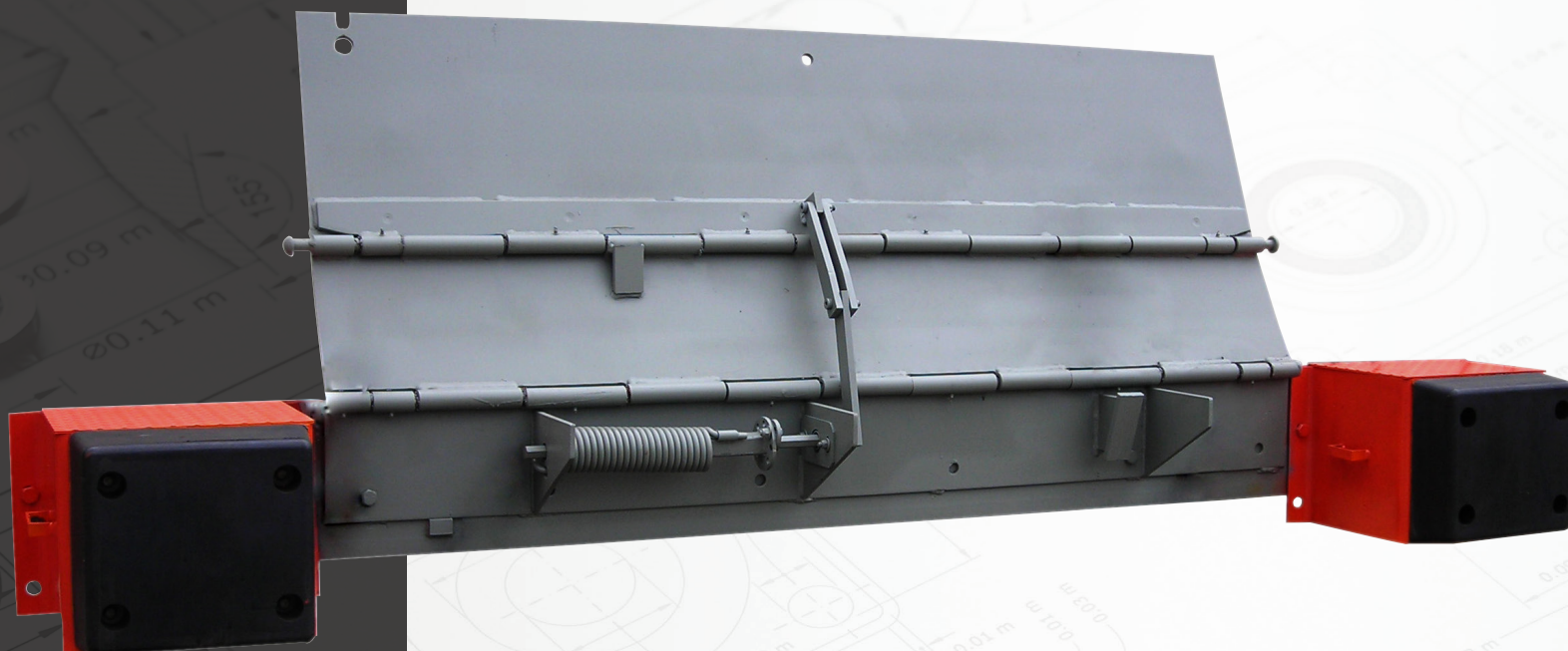


# Edge of Dock TS-Series Mechanical Edge of Dock

A mechanical edge-of-dock leveler with tremendous value



**20K - 35K**  
CIR

**66" - 84"**  
WIDTH

## FEATURES

- Torsion spring lift mechanism
- Heavy-duty, self-storing steel lever with EZ grip handle
- Roller-bearing lift mechanism for easy lifts
- Cold, rolled-steel hinge pins for added strength and long life
- Milled lip edge for smooth tire rollover
- Grease fittings throughout
- High-strength steel safety tread plate
- Full width distribution bar for extra durability
- Secondary gussets for added strength and extended life
- Heavy-duty bumper block assemblies with Tuf-Cord rubber bumpers 4"x12"x13"
- Bumper projection 15"
- Designed and manufactured in the USA

A Division of Systems, LLC

# Edge of Dock

## TS-Series Mechanical Edge of Dock

20K - 35K  
CIR

66" - 84"  
WIDTH

*Over 60 years ago, DLM® invented the edge-of-dock leveler and quickly set the standard for the industry. Today, the DLM NEVERLIFT Series sets a new standard. It is the absolute state-of-the-art in Mechanically operated edge-of-dock levelers. The DLM NEVERLIFT is yet another reason why there are more DLM edge-of-dock levelers in service than those of all other companies combined.*

DLM's TS edge-of-dock levelers mount to the dock face and provides a recommended working range of +/-3" and maximum operating range of +/-5" above and below dock level.

### STRUCTURALLY SUPERIOR

- Milled lip edge for smooth tire rollover
- Leveler lip and deck are constructed with high-strength 55,000 PSI min. yield, steel safety treadplate
- Two steel gussets for added strength and extended life
- Full width distribution bar for extra durability
- Deck construction is capacity dependent to insure your loading bridge matches the demands of the facility

### BUMPER OPTIONS

- Properly designed dock bumpers helps protect the deck plate and building from the approaching truck
- Constructed of formed steel and incorporate a full height internal gusset for extra support
- Feature 4" thick Tuf-Cord rubber bumper
- Every leveler is shipped standard with 12" x 13" heavy-duty bumper blocks
- Optional sliding bumpers that rise as the truck is being unloaded - thus reducing wear and tear
- Optional 18" tall steel faced or laminated bumpers

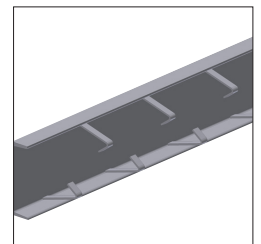
### OPERATION OF UNIT

1. First, place the handle in the side mounted receiver and pull back on the lever approximately 50°
2. Next push the lever toward its original position using the positioning rivet
3. Leveler is deployed
4. To store simply repeat the process until the lip clears the trailer and allow the unit to collapse into its stored position or when truck departs the leveler will automatically return to the stored position



### INSTALLATION METHOD

- For new construction, a flush or recessed 8"-12" embed channel (shown) is strongly recommended. Unit is then welded to the embed channel in the foundation wall. For existing docks without preferred embed channel, optional ramp approach plates or formed angles are available to maximize the strength of installation.



W194N11481 McCormick Dr. | Germantown, WI 53022  
dlmdocks.com | sales@dlmdocks.com  
800-643-5424



dlmdocks.com

*Designed, Engineered, and Manufactured in the U.S.A.*  
© 2024 Systems, LLC/DLM  
Consistent with our policy of continuing product improvement, we reserve the right to change product specifications without notice or obligation.

TS EOD 12/2024

A Division of Systems, LLC



Value Engineered  
Dock Levelers